



Title: Report to the Safer Neighbourhood Board of the Implications of Substance Misuse and Reasons for investment Locally
25th May 2016

Author: Andrew Thomson, Head of Drug & Alcohol Services

Why is this paper required: (Please tick one box)

For presentation at meeting	For discussion at meeting	For decision at meeting	For information only
✓	✓		

Recommendations:

To ensure that the Safer Neighbourhood Board has an oversight of the cost to society of substance misuse and the key strategic requirements to enable local communities to have a safer, healthier and more prosperous community. This information was produced by Public Health England who have the strategic responsibilities for reducing substance misuse.

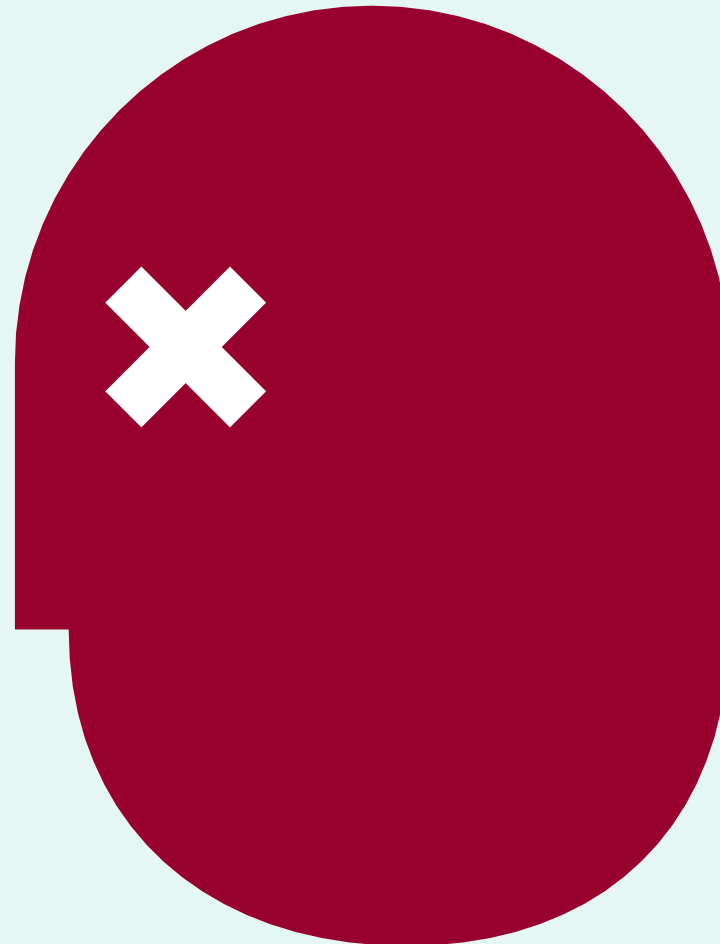


Alcohol and drugs prevention, treatment and recovery: **why invest?**





Alcohol problems are widespread



9 million adults drink at levels that increase the risk of harm to their health

1.6 million adults show some signs of alcohol dependence

Alcohol is the third biggest risk factor for illness and death



Drug use is widespread but addiction is concentrated



2.7 million adults used an illegal drug in the past year

299,000 heroin and crack users in England

40% of prisoners have used heroin

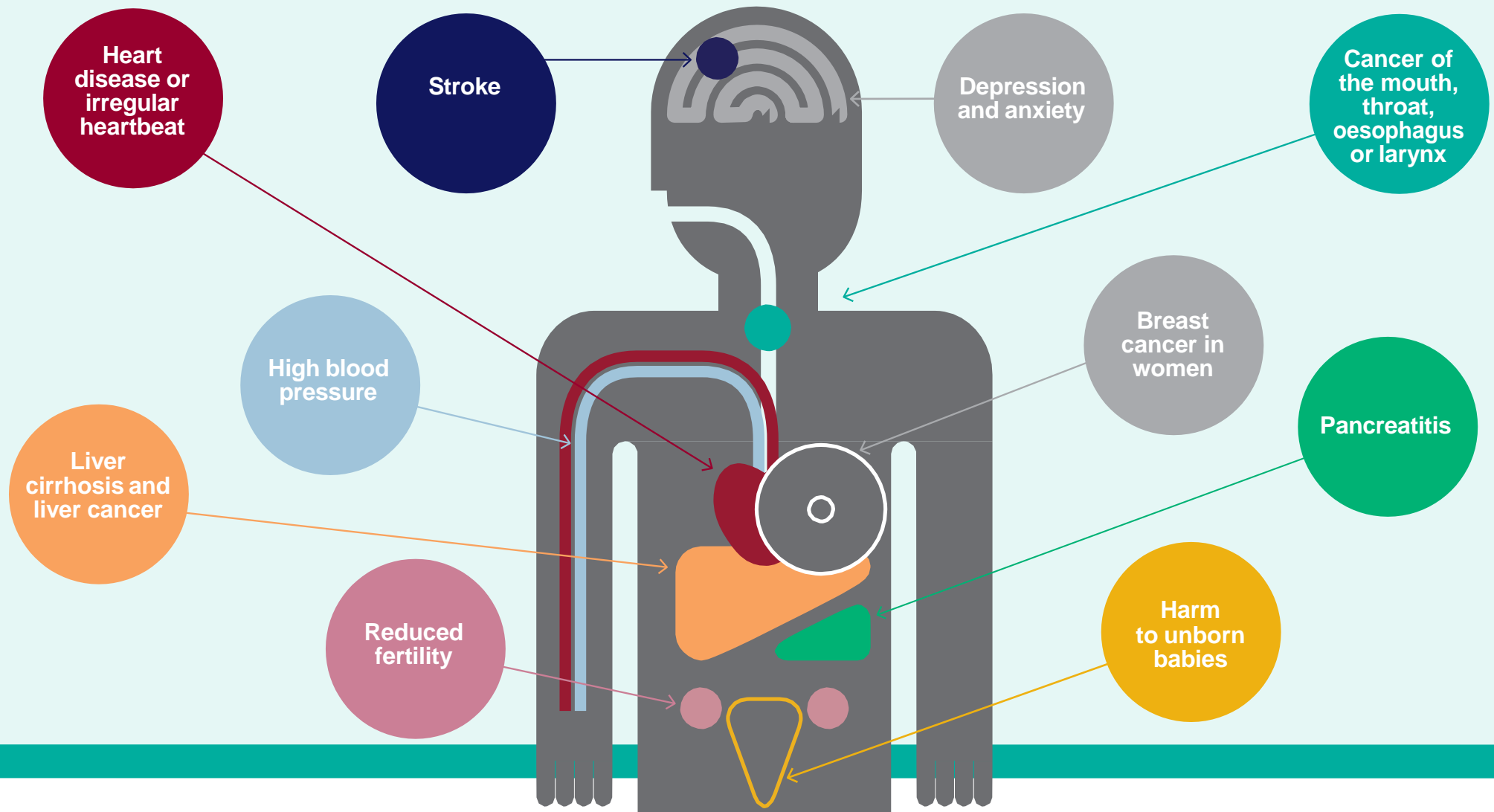
1,200,000 affected by drug addiction in their families – mostly in poor communities



The impact on health and mortality

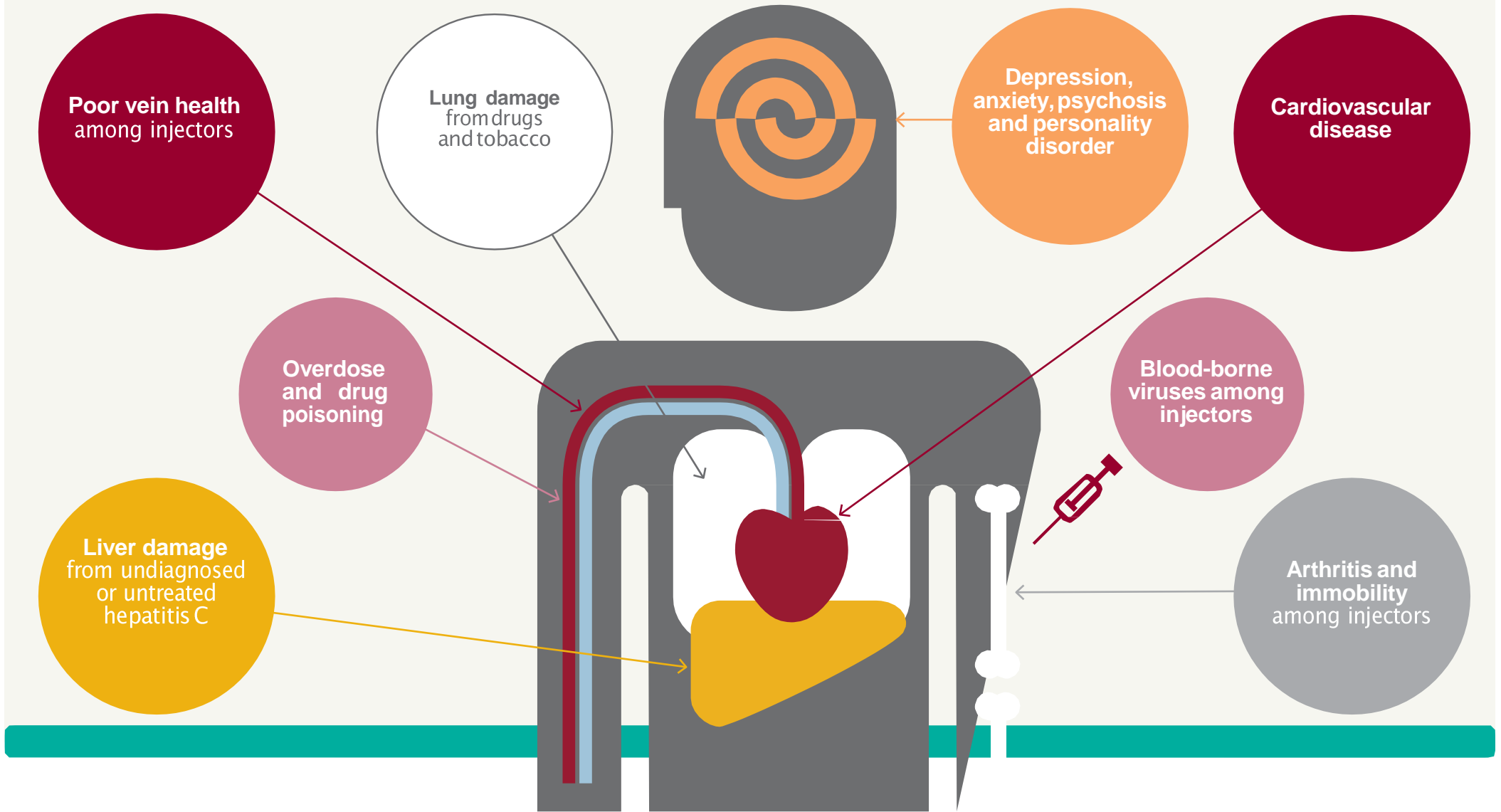


Alcohol misuse damages health





Drug misuse damages health

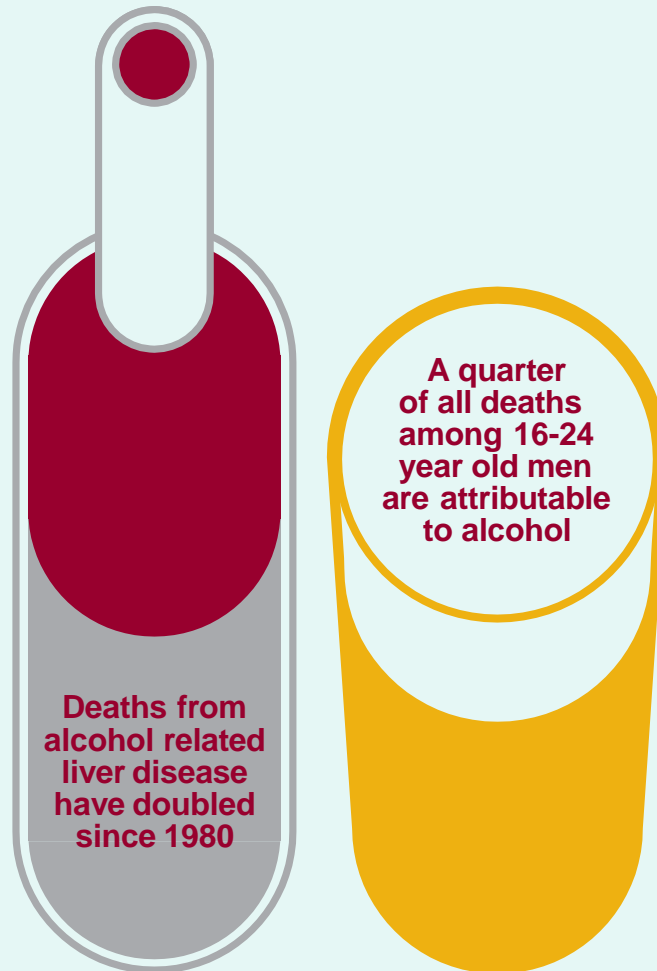




Alcohol and drug deaths

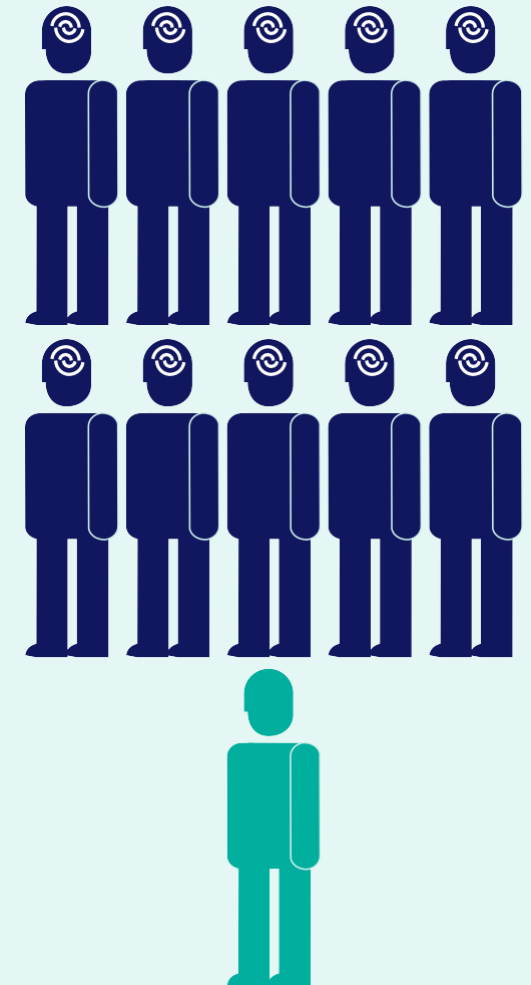
Alcohol misuse leads to many deaths

15,479 people died from alcohol-related causes in 2010, up 30% since 2001



Deaths among heroin users are 10 times the death rate in the general population

Deaths involving prescription medicines and 'club drugs' are rising





The impact on families and communities

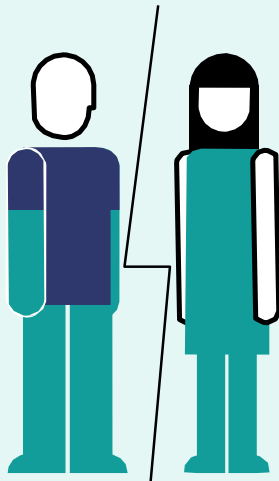


Alcohol misuse harms families and communities

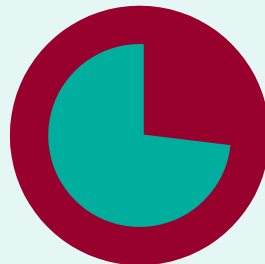
1

2

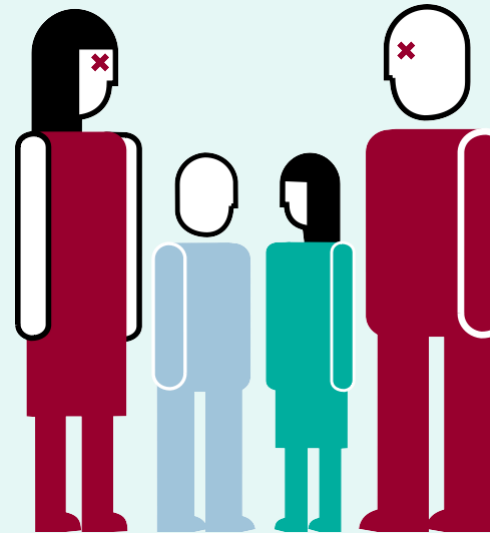
Almost **half**
of violent
assaults



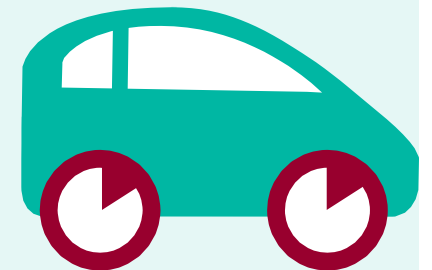
Domestic
violence and
marital
breakdown



27% of
serious
case
reviews
mention
alcohol
misuse



Physical, psychological
and behavioural problems
for children of parents
with alcohol problems



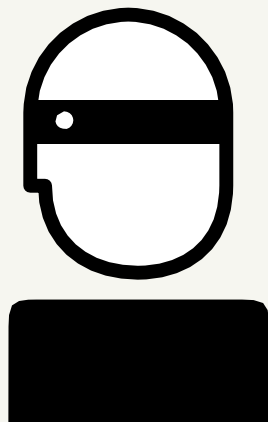
17% of road
fatalities



Drug misuse harms families and communities



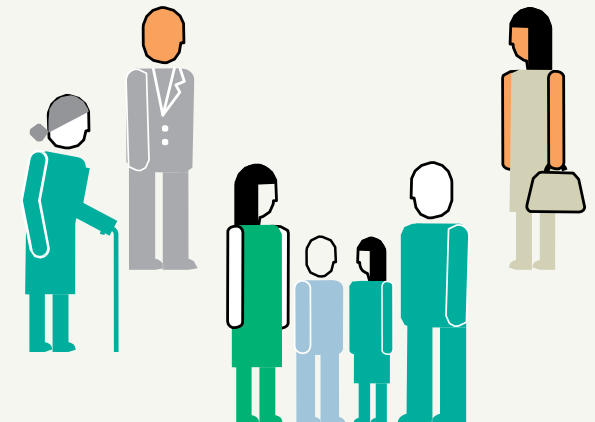
Parental drug use is a risk factor in **29%** of all serious case reviews



Heroin and crack addiction causes crime and disrupts community safety



A typical heroin user spends around **£1,400 per month** on drugs (2.5 times the average mortgage)



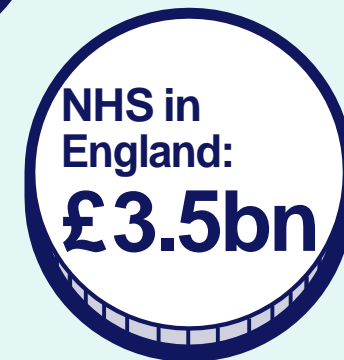
The public value drug treatment because it makes their communities safer and reduces crime. **82%** said treatment's greatest benefit was improved community safety



The costs



The annual cost of alcohol-related harm

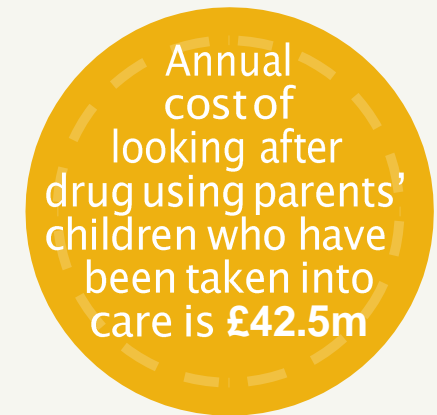
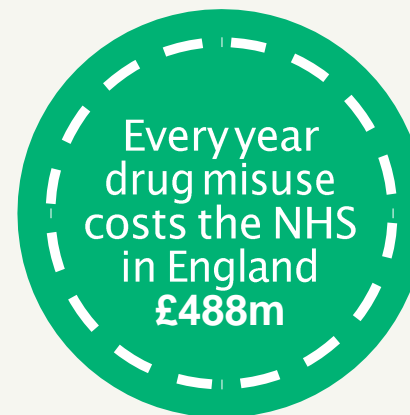
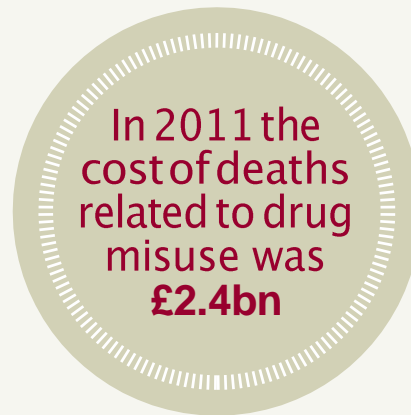
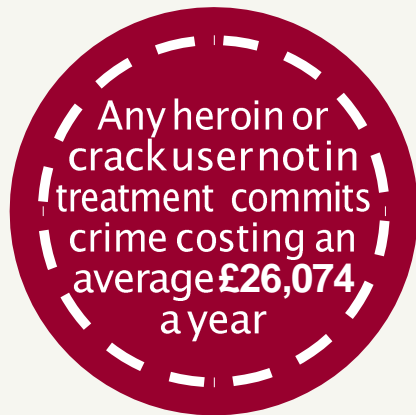




The annual cost of drug addiction

Every year it costs society

£15.4bn





The challenge



Alcohol – what needs to be done

1

Improve awareness

of alcohol harm among young people and delay the age of first use

2

For people who

drink, make lower risk drinking the norm and an easy choice to make

3

Target those who are

most at risk

4

Respond to and

reduce the harm experienced by those who have already developed problems



Drugs – what needs to be done

1

Prevention measures to build resilience among young people and to promote drug-free environments

2

Develop effective responses to the harm of new drugs, and help people who are addicted to medicines

3

Respond to the growing number of older drug users, many of whom have serious addiction and health problems

4

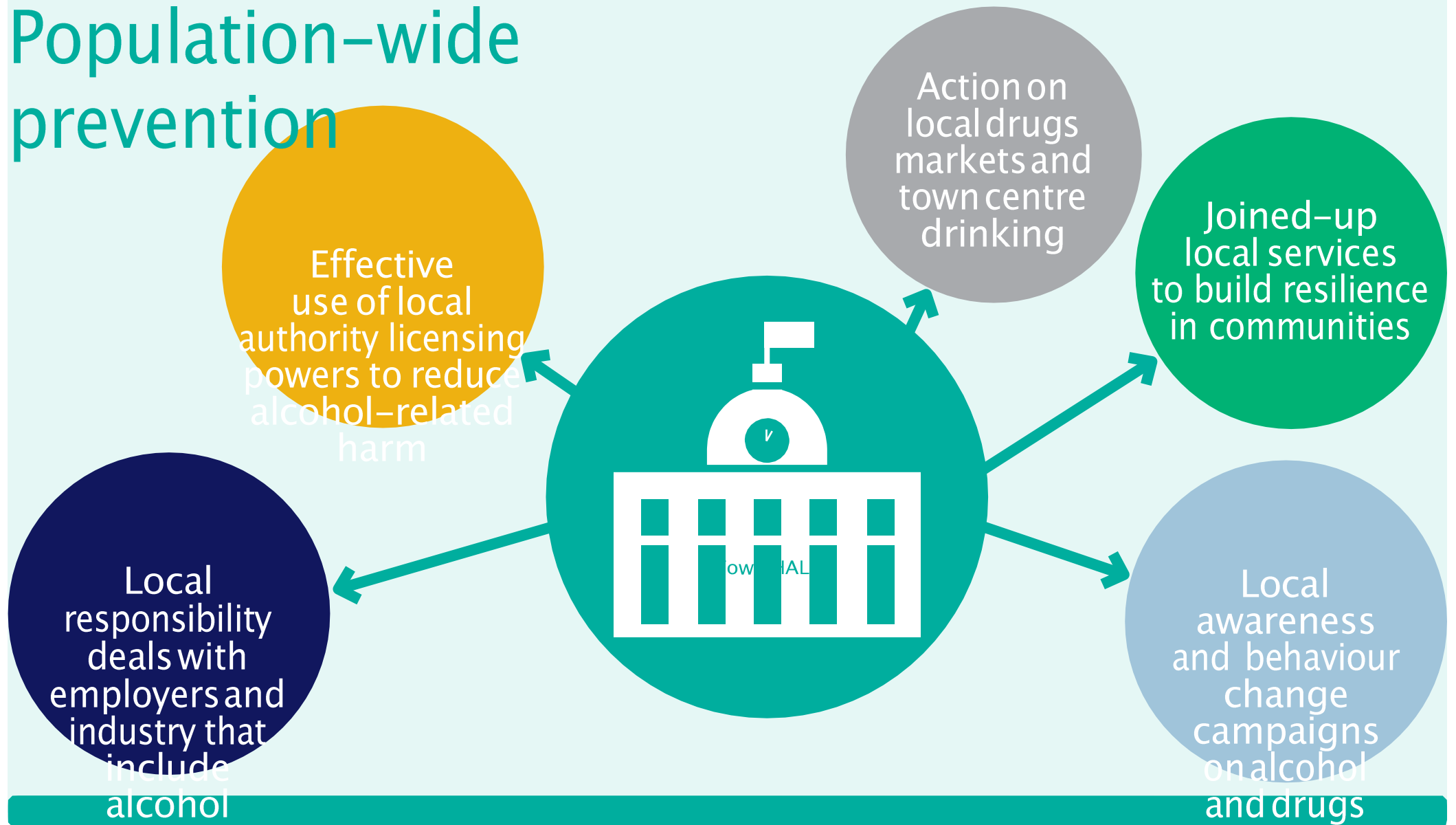
A package of support (treatment, housing, employment, positive social networks) to help people recover and rebuild families and communities



The levers and tools



Population-wide prevention





Targeted prevention – alcohol

Hospital alcohol liaison services to reduce the unnecessary burden on the NHS

Brief interventions in primary care and other settings to reduce the impact of alcohol on health

Evidence-based screening in the NHS Health Check to reduce harmful drinking

Prevention programmes to reduce young people's alcohol consumption



Targeted prevention and harm reduction – drugs

Advice, testing, vaccination and treatment for blood-borne viruses

Needle and syringe programmes to prevent infection and spread of blood-borne viruses

Prevent avoidable overdose deaths

work with local health partners to prevent and treat addiction to medicines

Interventions aimed at people to reduce harms



Specialist treatment (alcohol and drugs)



Specialist treatment should be accessible, matched to local need and NICE-compliant

All patients should have a mutually agreed and regularly reviewed care plan, setting out their treatment goals

All treatment should include support for behaviour change

It may also include appropriate prescribed medicines

Residential and community rehabilitation should be available for those who need it





Support for sustained recovery

Everyone should have access to support that promotes and sustains their recovery

Help people access mutual aid groups (e.g. AA, NA, SMART Recovery) and other positive social networks

People in recovery need access to stable accommodation

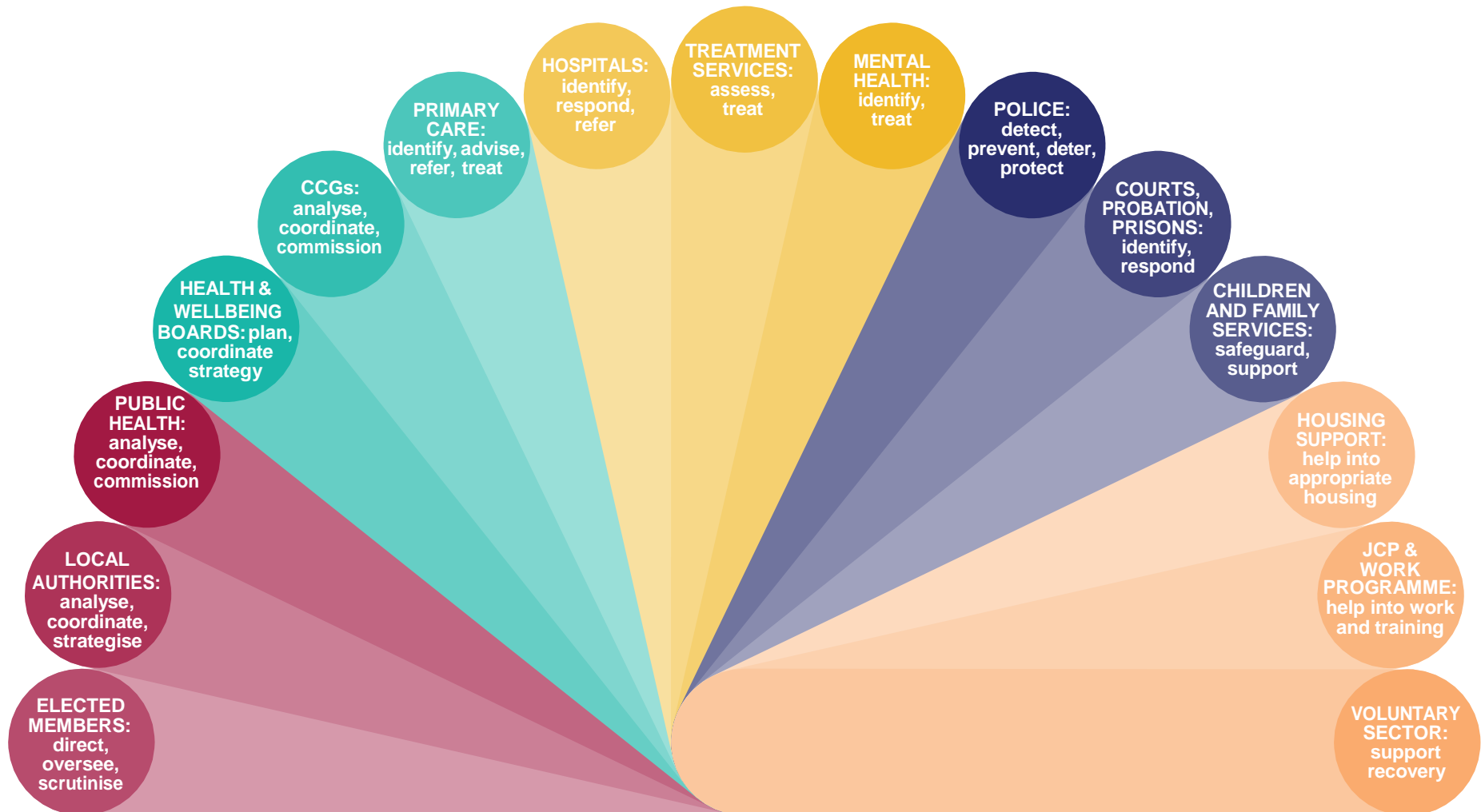
They should be supported into education, training or employment

Doing all of this will enable individuals to reach their full potential, will lead to better outcomes and save money





Partnership: the key to success





Public Health
England

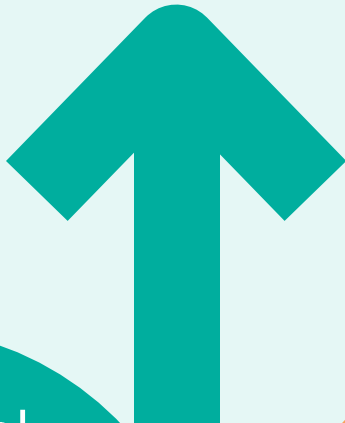
The benefits of investment



Intervening early works and saves money



Young people's drug and alcohol interventions result in **£4.3m health savings** and **£100m crime savings** per year



Drug and alcohol interventions can help young people get into education, employment and training, bringing a total lifetime benefit of up to **£159m**



Every **£1** spent on young people's drug and alcohol interventions brings a **benefit of £5-£8**



Investing in alcohol interventions saves money

Every 5,000 patients screened in primary care may prevent **67** A&E visits and **61** hospital admissions

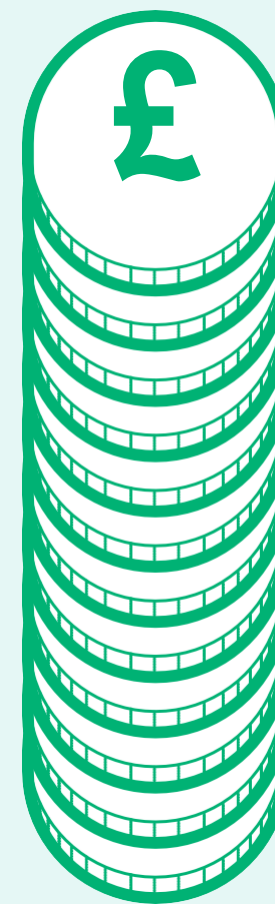
Costs £25,000
Saves £90,000

one alcohol liaison nurse can prevent **97** A&E visits and **57** hospital admissions

Costs £60,000
Saves £90,000

Every **100** alcohol-dependent people treated can prevent **18** A&E visits and **22** hospital admissions

Costs £40,000
Saves £60,000





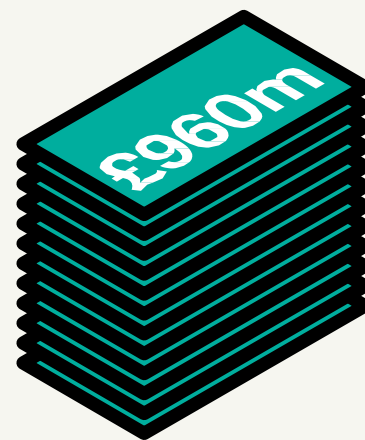
Investing in drug treatment cuts crime and saves money



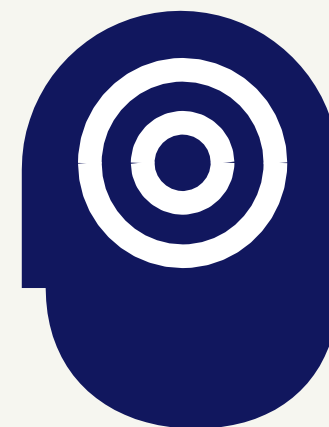
Every **£1** spent on drug treatment saves **£2.50** in costs to society



Drug treatment prevents an estimated **4.9m** crimes every year



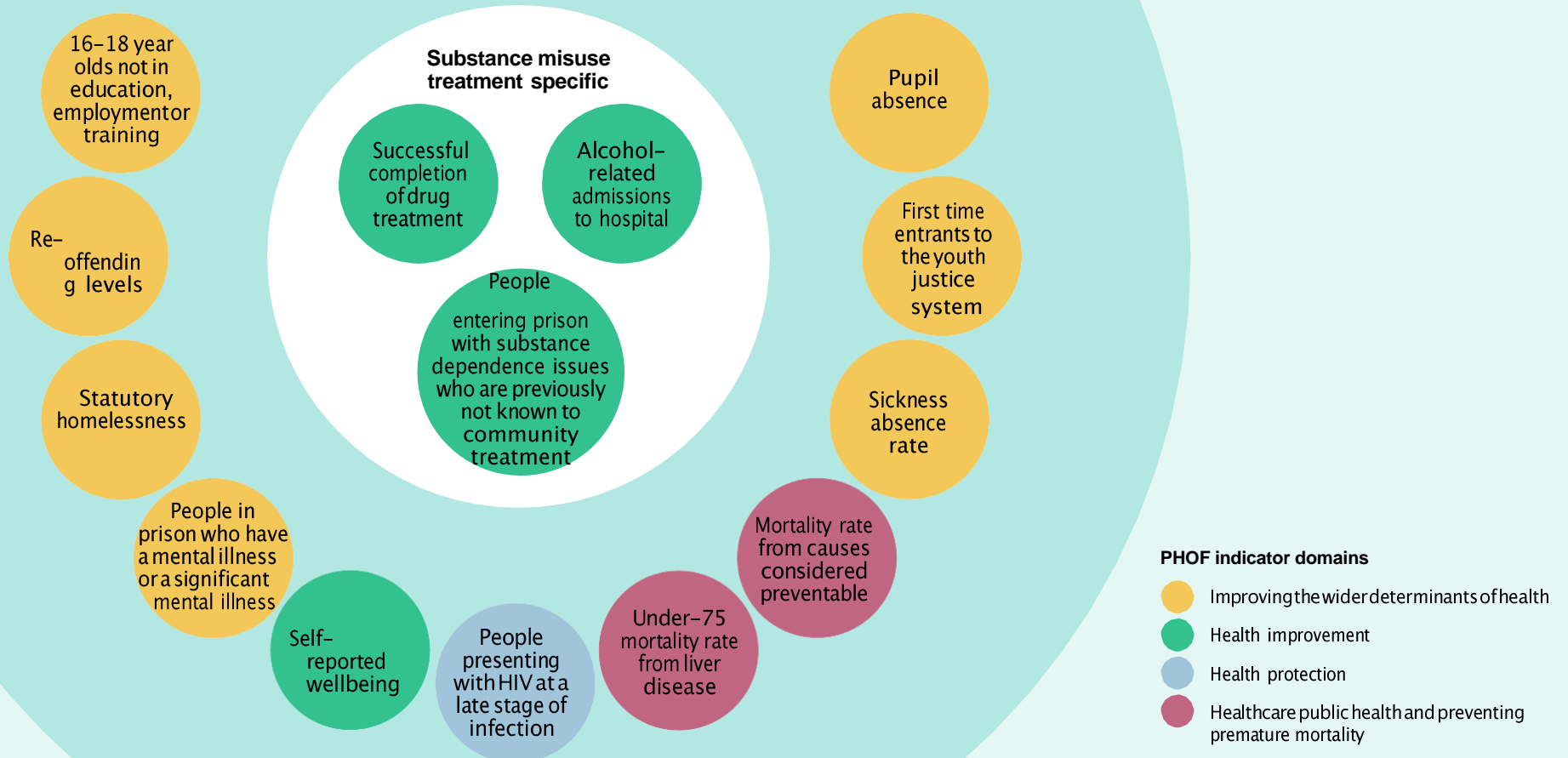
Treatment saves an estimated **£960m** costs to the public, businesses, criminal justice and the NHS



Investing in treatment = lifetime gains of **28,262 Quality Adjusted Life Years (QALYs)** – worth **£1.7bn**



Drug and alcohol interventions lead to better public health outcomes





Public Health
England

Find out more...



[PHE alcohol and drugs](#)

[Local PHE centre
alcohol and drugs team](#)

[PHE Alcohol Learning
Resources](#)

[Recovery resources for
drugs](#)